

TECNOLOGIC



K 31-32

78 x 35 - up to 4 outputs

Controllers / mini-programmers
with wattmeter function and independent timer

APPLICATION SECTORS

- Shoemaking Machineries
- Glueing and binding machines (hot glue)
- Packaging and blister packing machines
- Paint booths
- T-shirt print
- Climatic chambers
- Hot runner
- Glass bending ovens
- Extruders
- Industrial baking or large kitchens
- Continuous multi-zone ovens (for PCB, for leather goods, etc.)
- Ceramics ovens
- Heat-treatment ovens
- Ovens for goldsmiths and dentists
- Simple cascade controls

- Input for TC, RTD, PTC, NTC, mA or V
- **User Calibration**
- H/C PID Control with overshoot control, self-tune and **2 Autotuning algorithms**
- **8 segment programmer function with segment recovery, 2 events** and stasis control (guaranteed soak)
- **Independent timer** with 4 functioning modes
- H/C On/OFF Control with compressor protection time
- **Wattmeter** for calculating the instantaneous power and energy used
- **Digital Retransmission** of the set point
- **Counter** for days and hours worked with programmable threshold for **preventative maintenance**
- Delay at the start up function
- **Parameter sequence freely programmable**
- Ramp to set point change
- RS485 Serial Communication with Modbus RTU protocol
- Soft start

K 31-32 - 78 x 35 - up to 4 outputs

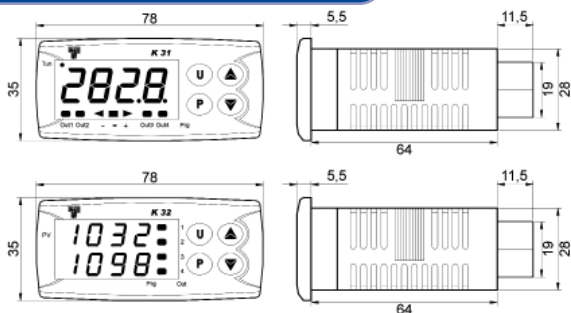
Single and double display



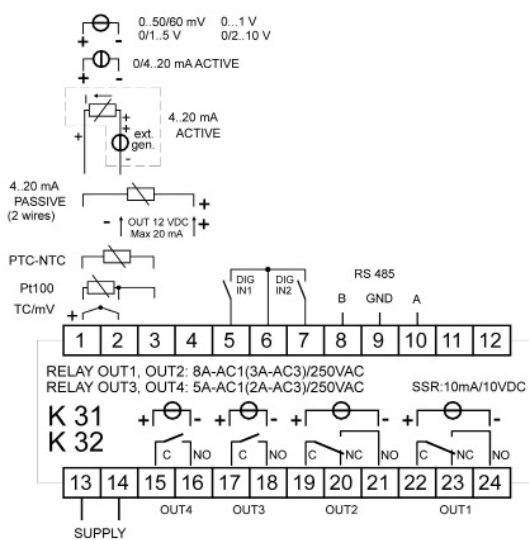
MECHANICAL DATA

- Housing:** UL 94 V0 self-extinguishing plastic
- Keyboard:** mechanical and "Sensitive Touch" type (for K32 only)
- Mounting:** flush in panel
- Dimensions:** 78 x 35 mm, depth 75,5 mm
- Panel cut-out:** 71 (-0 to + 0,6 mm) x 29 (-0 to +0,5 mm)
- Display:** **K31** - 4 Digit single display, red colour, h 12 mm + 3 LED Bargraph
K32 - 4 Digit double display, red and green colour, h 7 mm.
- Weight:** 180 g approx.
- Screw terminals:** 24 screw terminals (screw M3 for cables from 0.25 to 2.5 mm² or from AWG 22 to AWG 14)
- Protection Degree:**
 - Front protection: IP 65 (with gasket) according to EN 60070-1 for indoor use
 - Screw terminal: IP20.

DIMENSIONS (in mm)



CONNECTIONS



HOW TO ORDER

- K31/ K32 (*)** - = Controller
- K31/ K32 (*) T** = Controller + timer
- K31/ K32 (*) P** = Controller + timer + programmer

(*) **K32:** Add the code **S** to have "Sensitive Touch" keyboard .

Power supply

- F** = 12 V AC/DC
- L** = 24 V AC/DC (available soon)
- H** = 100 - 240 V AC/DC

Input

- C** = J, K, R, S, T, PT100, 0/12...60 mV + 2 Digital Inputs
- E** = J, K, R, S, T, PTC, NTC, 0/12...60mV + 2 Digital Inputs
- I** = 0/4...20 mA + 2 Digital Inputs
- V** = 0...1V, 0/1...5V, 0/2...10V + 2 Digital Inputs

Out 1

- R** = SPDT 8 A relay (resistive)
- O** = VDC for SSR

Out 2

- = Not available
- R** = SPDT 8 A Relay (resistive)
- O** = VDC for SSR

Out 3

- = Not available
- R** = SPST-NO 5 A Relay (resistive)
- O** = VDC for SSR

Out 4

- = Not available
- R** = SPST-NO 5 A Relay (resistive)
- O** = VDC for SSR

Communication

- = TTL ModBus
- S** = RS 485 ModBus

ACCESSORIES

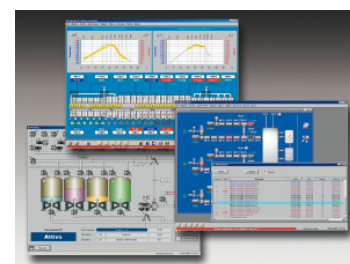
A01 - Programming key

- Makes it possible to:
 - Memorize the configuration of an instrument to transfer it to other instruments
 - Transfer a configuration to a PC
 - Memorize a configuration memorized in a PC
 - Let the instrument "converse" directly with a PC.



WinTec - Supervisor

- Data Acquisition
- Supervision
- Alarm management
- Recipe management
- Trend
- Reports.



TECNOLOGIC S.P.A.

27029 VIGEVANO (PV) - ITALY - VIA INDIPENDENZA, 56
Phone 0039/038169871 - FAX 0039/0381698730
e-mail: info@tecnologic.it • e-mail: support@tecnologic.it
http://www.tecnologic.it