

SKA Range

PCB mounted solid state relays for switching resistive or inductive loads.



FEATURES

RANDOM SWITCHING MODELS AVAILABLE
VDR PROTECTION
COMPACT BOARD MOUNTED PACKAGE
ZERO CROSS SWITCHING

SPECIFICATION

CURRENT SWITCHING: 4 amps
DIMENSIONS: 43.2x10.2x25.4mm
VOLTAGE SWITCHING: up to 460 volts
CONTROL VOLTAGE: 4-30 vdc

PART CODES	DESCRIPTION	PRICE (£)	
		1 - 9	10 +
SKA20420	4 amp rated, 12-275v switching, 4-30 vdc control	POA	POA
SKA20440	4 amp rated, 12-460 v switching, 4-30 vdc control	POA	POA

SKL and SKH Range

This range of PCB mounted relays offers exceptionally high current switching capabilities in a very compact package. This is achieved with a combination of highly rated thyristors and clip on heat sinks.



FEATURES

COMPACT SIZE
HIGH CURRENT SWITCHING (75 AMPS MAX)
UP TO 600 VOLT SWITCHING
RANDOM SWITCHING MODELS AVAILABLE ON REQUEST
SUITED TO INDUCTIVE OR RESISTIVE LOADS

SPECIFICATION

DIMENSIONS: 43.4 x 6.3 x 24.5 (SKL)
CURRENT SWITCHING: up to 27 amps
Actual continuous rating dependant on heatsink
CONTROL VOLTAGE: 4-14 vdc or 8 -32 vdc
DIMENSIONS: 43.6 x 22 x 35.7 (SKH)
SWITCHING VOLTAGE: 12 -600 v

PART CODES	DESCRIPTION	PRICE (£)	
		1 - 9	10 +
SKL10220	25 amp rated , 12-280 v switching, 4-14 vdc control	POA	POA
SKL10240	25 amp rated , 24-600 v switching, 4-14 vdc control	POA	POA
SKL10540	50 amp rated, 24-600 v switching, 8-32 vdc control	POA	POA
SKL20740	75 amp rated, 24-600 v switching, 8-32vdc control	POA	POA
SKH10240	10 amp rated@25 degc, (25 amp rated with ventilation), 24-600 vac switching, 4-14 vdc control, c/w heatsink	POA	POA
SKH20240	As above except 8-32 v dc control	POA	POA

SF Range

The SF range of miniature solid state relays offers ultra compact package size in a panel or PCB mount format.



FEATURES

FASTON TERMINALS
ZERO CROSS SWITCHING
COMPACT MINIATURE PACKAGE

SPECIFICATION

SWITCHING VOLTAGE: 12-280 vac
TERMINATION: 6.3mm spade switching side, 4.8mm spade input side
CONTROL VOLTAGE: 4-30 vdc
DIMENSIONS: 21mm x 35.5 mm x 15mm

PART CODES	DESCRIPTION	PRICE (£)	
		1 - 9	10 +
SF541310	10 Amp rated, 12-280 v switching, 4-30 vdc control	POA	POA
SF546310	20 Amp rated, 12-280 v switching, 4-30 vdc control	POA	POA

SP Range

These compact panel mounted relays have 6.3mm faston terminals. They can switch up to 12 amps and offer high over voltage protection up to 800v.



FEATURES

INTEGRATED OVER VOLTAGE PROTECTION
ZERO CROSS SWITCHING OR RANDOM
6.3MM FASTON TERMINALS

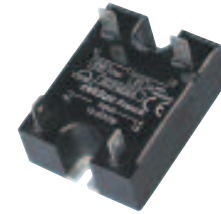
SPECIFICATION

CURRENT SWITCHING: up to 12 amps
(25 amp thyristor)
SWITCHING VOLTAGE: 12-280 vac
CONTROL VOLTAGE: 3-32 vdc, 4-32 vdc

PART CODES	DESCRIPTION	PRICE (£)	
		1 - 9	10 +
SP852120	12 amp rated, 12-280 v switching, 4-32 vdc control, zero cross switching version	POA	POA
SP752120	12 amp rated, 12-280 v switching, 3-32 v dc control, random switch on version	POA	POA

SCF Range

The SCF range are a standard panel mount size with push on 6.34mm tag terminations. Designed for resistive loads c/w status led. The model with integrated vdr is suited to switching inductive loads such as solenoids or motors.



FEATURES

6.34MM TAG TERMINALS, LED
ZERO CROSS SWITCHING
600 V PEAK
INTEGRAL VDR TRANSIENT PROTECTION

SPECIFICATION

DIMENSIONS: 44.5mm x 58.2mm x 27mm
CONTROL VOLTAGE: 4-30 v dc
TERMINATION: 6.3MM tags (4.3mm control for SCF42170-L)

PART CODES	DESCRIPTION	PRICE (£) 1 - 9
SCF42160	25 AMP RATED, 12-280 V, 4-30 VDC IN	POA
SCF42170-L	25 AMP RATED, 12-280 V, 3-30 VDC IN, INTEGRAL VDR	POA

S0 Range

The new S0 range of relays offers, zero cross switching in a standard panel mount package with built in IP20 cover and status led.



FEATURES

STATUS LED
BUILT IN IP20 COVER
REGULATED CONTROL CIRCUIT INPUT CURRENT
TRANSIL ON INPUT

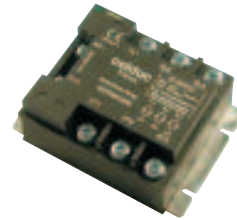
SPECIFICATION

SWITCHING VOLTAGE: 12-280 vac, 24-510 v
CONTROL VOLTAGE: 3-32 v dc, 20 -265 vac
SWITCHING CURRENT: 25, 50, 75, 125 amp
DIMENSIONS: 45mm x 58mm x 27mm

PART CODES	DESCRIPTION	PRICE (£) 1 - 9
S0942460	25 AMP RATED, 12-280V, 3-32 VDC IN	POA
S0945460	50 AMP RATED, 12-280V, 3-32 VDC IN	POA
S0842974	25 AMP RATED, 12-275V, 20-265 VAC IN	POA
S0865970	50 AMP RATED, 24-510V, 20-265 VDC IN	POA
S0967460	75 AMP RATED, 24-600V, 3.5-32 VDC IN	POA
S0869070	125 AMP RATED, 24-510V, 8.5-32 VDC IN	POA
S0869970	125 AMP RATED, 24-510V, 20-265 VDC IN	POA
1LK00070	Special termination kit for high current units, comprising of high current bus bars	POA

Celpac® SGT Range

The SGT range of conventional 3 phase solid state relays, optimized for resistive loads these units provide compact cost effective 3 phase switching. Heatsinks need to be used to achieve maximum current switching.



FEATURES

DC OR AC INPUTS
STATUS LED
ZERO CROSS SWITCHING

SPECIFICATION

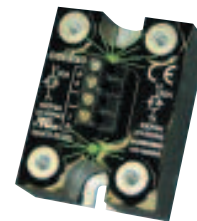
SWITCHING VOLTAGE: 24 – 600 vac
CONTROL VOLTAGE: 8.5 to 30 v dc
CURRENT RATING: 12, 25, 50 and 75 amps

PART CODES	DESCRIPTION	PRICE (£) 1 – 9
SGT961360	3 x 12 AMP RATED, 24-600 V, 8.5-30 VDC IN	POA
SGT962360	3 x 25 AMP RATED, 24-600 V, 8.5-30 VDC IN	POA
SGT965360	3 x 50 AMP RATED, 24-600 V, 8.5-30 VDC IN	POA
SGT967360	3 x 75 AMP RATED, 24-600 V, 8.5-30 VDC IN	POA

See solid state relays accessories for terminal protection covers

SCB Range

The SCB range are two solid state relays in one standard relay package. These units can have either on set of input connections or two depending on the application.



FEATURES

2 RELAYS IN ONE PACKAGE
CAN SWITCH TWO PHASES
SINGLE OR DUAL CONTROL
STATUS LED

SPECIFICATION

SWITCHING VOLTAGE: 12-280 vac, 24-600 vdc
CONTROL VOLTAGE: 8-35 vdc, 1 or 2 x control
DIMENSIONS: 44.8mm x 58mm x 27 mm

PART CODES	DESCRIPTION	PRICE (£) 1 – 9
SCB941300	2 x 12 AMP, 12-280 V, 8-30 VDC IN X 1	POA
SCB941600	2 x 12 AMP, 12-280 V, 8-30 VDC IN X 2	POA
SCB942300	2 x 25 AMP, 12-280 V, 8-30 VDC IN X 1	POA
SCB942600	2 x 25 AMP, 12-280 V, 8-30 VDC IN X 2	POA
SCB665300	2 x 50 AMP, 24-600 V, 8-35 VDC IN X 1	POA
SCB945600	2 x 50 AMP, 24-600 V, 8-30 VDC IN X 2	POA

See solid state relays accessories for terminal protection covers

Solid state relays



SVT Range

The SVT range of 3 phase solid state relays offers switching for resistive or inductive loads. Similar to the SGT range however the SVT range has a built in IP20 protection cover. Ratings of up to 125 amps per phase are available, ideal for loads with a high inrush or when they are in high ambient conditions



FEATURES

- RATED UP TO 125 AMPS PER PHASE
- LOAD STATUS LED
- BUILT IN COVER
- ZERO CROSS SWITCHING
- AC CONTROL INPUT OPTION

SPECIFICATION

- CURRENT RATING: 50 to 125 amp units, 3 phase
- CONTROL VOLTAGE: 4-30 V dc
- SWITCHING VOLTAGE: 24-600 vac

PART CODES	DESCRIPTION	PRICE (£)	
		1 - 9	10 +
SVT965460E	50 amp rated, 24-600 v switching, 4-30 vdc input	POA	POA
SVT967460E	75 amp rated, 24-600 v switching, 4-30 vdc input	POA	POA
SVT868394	95 amp rated, 24-500 v switching, 8.5-30 vdc input	POA	POA
SVT869394	125 amp rated, 24-500 v switching, 8.5-30 vdc input	POA	POA

Celpac® SIL Range

The SIL range of relays are mounted on a heatsink with an integral din rail clip. In addition to a high current switching capability, they offer a 22.5mm wide IP20 housing.



FEATURES

- 22.5MM WIDE
- GREEN STATUS LED
- RATINGS UP TO 75 AMP
- BUILT IN HEATSINK

SPECIFICATION

- APPROVALS: UL and CSA, CE
- CONTROL RANGE: 3-32 v dc, 150-240 v ac
- CURRENT RATINGS: 25 to 75 amp units
- SWITCHING VOLTAGE: 12-510 v
- DIMENSIONS: 22.5mm x 80 mm x 116 mm

PART CODES	DESCRIPTION	PRICE (£)
		1 - 9
SIL842170	25A RATING, 25 AMP @ 35°C, 12-275 V, 3-32 VDC IN	POA
SIL842970	25A RATING, 25 AMP @ 35°C, 12-275 V, 150-240 VAC IN	POA
SIL855160	50A RATING, 32 AMP @ 30°C, 12-480 V, 3-32 VDC IN	POA
SIL865970	75A RATING, 35 AMP @ 30°C, 24-510 V, 150-240 VAC IN	POA
SIL867170	75A RATING, 35 AMP @ 30°C, 24-510 V, 3.5-32 VDC IN	POA

Celpac® SIM Range

The SIM range offers higher ratings than the SIL range. On a slightly larger 45 mm wide heatsink with built in din rail clip.



FEATURES

STATUS LED
UP TO 75 AMP RATED
BUILT IN HEATSINK

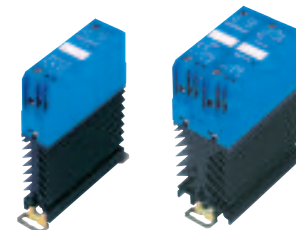
SPECIFICATION

SWITCHING VOLTAGE: 24 to 510 v
CONTROL VOLTAGE: 3.5 and 17-60, 150-240 vac
CURRENT RATING: 50 AND 75 AMP
DIMENSIONS: 45mmx80mm x 116mm

PART CODES	DESCRIPTION	PRICE (£)	
		1 - 9	10 +
SIM865770	50A RATING, 37 AMP @ 30°C, 24-510 V, 17-60 VAC/DC IN	POA	POA
SIM867170	75A RATING, 42 AMP @ 30°C, 24-510 V, 3.5-32 VDC IN	POA	POA
SIM865970	50A RATING, 37 AMP @ 30°C, 24-510v, 150-240VAC/DC IN	POA	POA

SIB Range

The SIB range offers 2 phase switching in a 45 mm wide din rail mounted package. With two separate control voltage inputs these units could be used where full 3 phase switching is not essential.



FEATURES

AC OR DC CONTROL INPUTS
45MM WIDE SLIM PACKAGE
DIN RAIL MOUNTED
IP20 BUILT IN COVER

SPECIFICATION

CONTROL VOLTAGE: 3.5 -32 vdc or 150-240 vac/dc, one per phase
CURRENT RATING: 2 x 50 Amp or 2 x 75 amp
SWITCHING VOLTAGE: 24-510 vac

PART CODES	DESCRIPTION	PRICE (£)	
		1 - 9	10 +
SIB865170	2x50A rating, 2x22 Amp @ 30°C, 24-510v switching, 2x3.5-32v dc in	POA	POA
SIB865970	2x50A rating, 2x22 Amp @ 30°C, 24-510v switching, 2x150 -240vac/dc in	POA	POA
SIB867170	2x75A rating, 2x25 Amp @ 30°C, 24-510v switching, 2x3.5-32vdc in	POA	POA

SILD and SOD system monitoring relays

This range of diagnostic relays are designed to monitor various relay and load conditions. Primarily to flag up an SSR or load failure. The patented design monitors both the input status (control signal) and the switched output of the relay. By comparing these values in its microprocessor it will manage the status of the diagnostic LEDs and alarm output in any of these fault conditions:

- Loss of mains supply
- Load open circuit (e.g. blown heater)
- Failure of its switched output

If any of the conditions occur its alarm will go open circuit signalling a fault to your PLC or control panel.



FEATURES

22.5MM WIDE DIN RAIL MOUNTED (SILD)
 BUILT IN HEATSINK (SILD)
 NO EXTERNAL POWER SUPPLY NEEDED FOR DIAGNOSTIC SIGNAL LEDs
 DIAGNOSTIC SWITCHED OUTPUT
 PANEL MOUNTING (SOD)
 REMOVABLE CONNECTOR BLOCKS (SOD)
 UL CSA APPROVED

SPECIFICATION

CURRENT SWITCHING: up to 75 rated
 SWITCHING VOLTAGE: 70 to 510 v
 DIMENSIONS: 22.5x80x116 mm (SILD)
 CONTROL VOLTAGE: 3 – 32 v, 5-30 vdc, 3.5-32 vdc
 DIMENSIONS: 45x58.5x33.6mm (SOD)
 ALARM OUTPUT: normally closed, open in alarm

PART CODES	DESCRIPTION	PRICE (£)	
		1 – 9	10 +
SILD845160	32 amp (50 amp rated thyristor), 70-280 vac switching, 3-32 vdc control	POA	POA
SILD867170	35 amp (75 amp rated thyristor), 150-510 vac switching, 3.5 – 32 vdc control	POA	POA
SOD843180	35 amp rated, 70-275 vac switching, 4-30 vdc control	POA	POA
SOD865180	50 amp rated, 150-510 vac switching, 5-30 vdc control	POA	POA
SOD867180	75 amp rated, 150-510 vac switching, 5-30 vdc control	POA	POA

PLEASE CONTACT THE SALES OFFICE TO CHECK STOCK AVAILABILITY

Celpac® SIT Range

The SIT range of relays offer 3 phase switching with a built in heatsink for optimum current switching capability. Compact and reliable, its 3 x 50 amp rating reduces to 26 amps per phase at 30°C if it is passing current continuously. Once regulating, higher currents can be switched.



FEATURES

DIN RAIL CLIP
COMPACT 3 PHASE PACKAGE
BUILT IN HEATSINK
3 X 50 AMP RATING

SPECIFICATION

CURRENT RATING: 3 X 50A
SWITCHING VOLTAGE: 24 – 600 v
CONTROL VOLTAGE: 10-30 vdc, and 90-240 vac
DIMENSIONS: 126 mm x 89mm x 98 mm

PART CODES

DESCRIPTION

PRICE (£)

1 – 9

SIT865570	3 x 50A RATING, 3 x 26 AMP @ 30°C, 24-600 V, 10-30 VDC IN	POA
SIT865990	3 x 50A RATING, 3 x 26 AMP @ 30°C, 24-600 V, 90-240 VAC IN	POA

3 phase assemblies

3 phase heatsink assemblies are available pre assembled upon request. Below are three standard units offering 75 and 125 amp ratings. Relay data sheets must be referenced to check maximum current ratings for various ambient temperatures.



FEATURES

SAFETY COVER INCLUDED
STATUS LED
DIN RAIL MOUNTING

SPECIFICATION

DIMENSIONS: 50 A, 150mm(h) x 110mm(w) x 100mm(d), 75 to 125 Amp, 160mm x 110mm x 145 mm (inc. disk thermostat)
CONTROL VOLTAGE: 8.5 to 30 vdc, 90 -240 vac
SWITCHING VOLTAGE: 24 – 600 vac (75A version)
24 – 500 vac (125A version)

PART CODES

DESCRIPTION

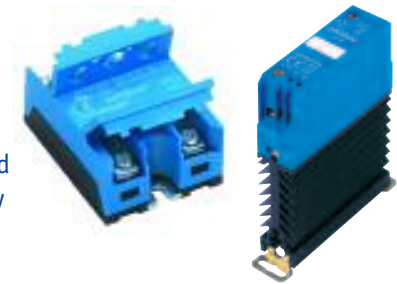
PRICE (£)

1 – 9

WF031100/125A/DC/ASS	3 x 125A rating, 3 x 50 AMP @ 60°C, 0.3K/W heatsink c/w fan and overtemp thermostat, 8.5-30VDC input (50 amp switching, current limited by size of wire (10mm ² max) into terminal connections), built in terminal covers	POA
WF031100/125A/AC/ASS	3 x 125A rating, 3 x 50 AMP @ 60°C, 0.3K/W heatsink c/w fan and overtemp thermostat, 90-240VAC input (50 amp switching, current limited by size of wire (10mm ² max) into terminal connections), built in terminal covers	POA
WF031100/75A/ASS	3 x 75A rating, 3 x 55 AMP @ 30°C, 0.3K/W heatsink c/w fan and overtemp thermostat	POA

Phase angle controllers

These compact, low cost, phase angle control modules are the new generation of micro processor based power controllers. They are ideal for simple motor speed or light dimming control and can be controlled manually by potentiometer or by one of our PID controllers.



FEATURES

COMPACT SIZE
 PANEL OR DIN MOUNTING
 HIGH CURRENT CAPABILITY
 MAX 125AMPS SWITCHING
 INTEGRAL TERMINAL COVERS
 MICRO PROCESSOR CONTROL
 90-480VAC SWITCHING
 0-10VDC OR 4-20MA CONTROL SIGNAL INPUT
 HIGH CURRENT TERMINAL ADAPTOR KIT

SPECIFICATION

Chassis mount 45w x58.5L x 30mm high
 Din mount C/W heatsink
 22.5/45w x 98L x 119mm deep
 50-125amp with appropriate heatsink
 32/38 amps @ 30°C ambient
 0-10v control 20K impedance
 4-20mA dynamic impedance
 40-70 Hz switching
 Integral VDR and Snubber
 Input/output 4000v isolation
 90-480vac output
 UL/cUL

PART CODES	DESCRIPTION	PRICE (£)	
		1 - 9	10 +
S0445400	50A, 90 -280vac output, 4-20mA control, Chassis mount	POA	POA
S0465420	50A, 200-400vac output, 4-20mA control, Chassis mount	POA	POA
S0467420	75A, 200-400vac output, 4-20mA control, Chassis mount	POA	POA
S0468420	95A, 200-400vac output, 4-20mA control, Chassis mount	POA	POA
S0469420	125A, 200-400vac output, 4-20mA control, Chassis mount	POA	POA
1LK00070	Special termination kit for high current (50Amp+) units, comprising of high current bus bars	POA	POA
SIL465000	32A, 160-450vac output, 0-10vdc control, Integral heatsink, Din mounting	POA	POA
SIM465000	38A, 160-450vac output, 0-10vdc control, Integral heatsink, Din mounting	POA	POA

See heatsinks suitable for S0 series

Solid state relay accessories

PART CODES	DESCRIPTION	PRICE (£)	
		1 - 9	10 +
1K470000	Plastic protection covers for 2 phase SCB relays	POA	POA
1K199000	Plastic protection covers for 3 phase SGT relays	POA	POA
1K460000	Plastic protection covers for single phase relays	POA	POA
5 TH15000	Tube of thermal grease for mounting approximately 30 relays	POA	POA
5 TH21000	Thermal pads for use with S0 or SC relays	POA	POA

Phase angle controllers - 3 phase

This range of proportional controllers offers switching of various different loads. Used for resistive loads, voltage control, motor speed control or phase angle control. This includes the switching of transformers, rectifiers, heaters, fans using either 4-20,0-10 v or potentiometer inputs. These units have diagnostic facilities along with multiple setting options controlled by dip switch selection.



FEATURES

COMPACT HOUSING
SOFTSTART/SOFTSTOP
DIAGNOSTIC FUNCTIONS
POWER FACTOR CORRECTION
INDUCTIVE OR RESISTIVE LOADS
DELTA OR STAR WIRING
MICROPROCESSOR CONTROLLED

SPECIFICATION

TURN ON TIME: 100ms
SWITCHING VOLTAGE: 200-480 v ac
FREQUENCY: 40-65 hz
PEAK VOLTAGE: 1200 v
MAX MOTOR POWER: 5.5kw @ 400vac star connection
CONTROL VOLTAGE: 0-10 v

PART CODES	DESCRIPTION	PRICE (£)	
		1 - 9	10 +
SVTA4650	50 amp rated, panel mounted, 0-10 v control *	POA	POA
SVTA4651	50 amp rated, panel mounted, potentiometer control, *	POA	POA
SVTA4684	95 amp rated, panel mounted, 4-20 ma control *	POA	POA
SVTA4690	125 amp rated, panel mounted, 0-10 v control *	POA	POA
SVTA4691	125 amp rated, panel mounted, potentiometer control *	POA	POA
SVTA4694	125 Amp rated, panel mounted, 4-20 ma control *	POA	POA
SWTA4620	22 amp unit, c/w heatsink din rail mounted, 0-10 v control *	POA	POA
SWTA4630	32 amp rated, c/w heatsink din rail mounted, 0-10 v control *	POA	POA
SWTA4631	32 amp rated, c/w heatsink din rail mounted, potentiometer control *	POA	POA
SWTA4634	32 amp rated, c/w heatsink din rail mounted, 4-20 ma control *	POA	POA
SWTA4650	50 amp rated, c/w heatsink with fan cooling din rail mounted, 0-10 v control *	POA	POA

* Please note: SWTA products are designed with heatsinks to switch the stated current in a 25°C ambient

* Please note: SVTA products are panel mounted and need to be de rated depending on ambient temperature and mounting.

Heatsinks

All SSRs suffer from reduced current switching capability due to the heat they generate. Ambient temperatures also have an effect. To minimize this we recommend the use of a heatsink based on the switching load and ambient conditions. All these units have din rail mounted clips or screw facilities.



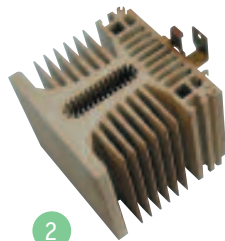
FEATURES

ANODIZED METAL
DIN RAIL OR SCREW FIXING
BUILT IN FAN (WF03)

PART CODES	DESCRIPTION	PRICE (£)	
		1 - 9	10 +
WF031100 (1)	0.3k/w, 110mm x120mmx145mm c/w fan and thermostat (95°C rated) for use with SO, SC, SGT, SVT relays	POA	POA
WF115100 (2)	0.9k/w, 110mmx 100mmx100mm, SO, SC, SGT, SVT relays	POA	POA
WF131100 (3)	1.1k/w, 83mmx90mmx90mm, SO, SC relays	POA	POA
WF108110 (4)	1.1k/w, 90mmx81mmx98 mm, SO, SC relays	POA	POA
WF121000 (5)	1.2k/w, 100mm x 40mmx 100mm, SO, SC, SGT, SVT relays	POA	POA
WF151200 (6)	2.2k/w, 45mm x 73mmx80mm, SO, SC relays	POA	POA
WF262100 (7)	2.2 k/w, 48mmx60mmx72mm, SO, SC relays	POA	POA



1



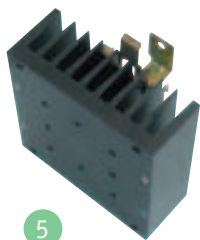
2



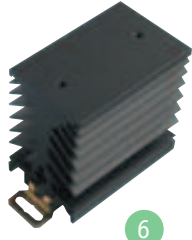
3



4



5



6



7