



K 48-49

48 x 48 - up to 3 outputs

Regulators / mini-programmers with wattmeter function and independent timer

APPLICATION SECTORS

- Shoemaking Machineries
- Glueing and binding machines (hot glue)
- Packaging and blister packing machines
- Paint booths
- T-shirt print
- Climatic chambers
- Hot runner
- Glass bending ovens
- Extruders
- Industrial baking or large kitchens
- Continuous multi-zone ovens (for PCB, for leather goods, etc.)
- Ceramics ovens
- Heat-treatment ovens
- Ovens for goldsmiths and dentists
- Simple cascade controls

- Input for TC, RTD, PTC, NTC, mA or V
- User Calibration
- H/CPID Control with overshoot control, self-tune and 2 Autotuning algorithms
- 8 segment programmer function with events and stasis control (guaranteed soak)
- Independent timer with 4 functioning modes
- H/C On/OFF Control with compressor protection time
- Wattmeter for calculating the instantaneous power and energy used
- Digital Retransmission of the set point
- Counter for days and hours worked with programmable threshold for programmed maintenance
- Delay at the start up function
- Parameter sequence freely programmable
- Ramp to set point change
- Soft start

K 48-49 - 48 x 48 - up to 3 outputs

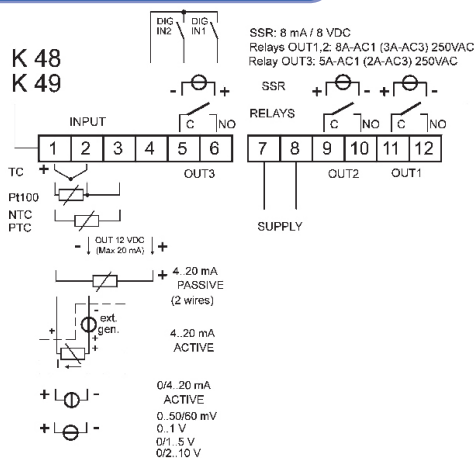
Single and double display



MECHANICAL DATA

Housing: UL 94 V0 self-extinguishing plastic
 Mounting: flush in panel
 Dimensions: 48 x 48 mm (1/8 DIN), depth 98 mm
 Panel cut-out: 45 (-0 to +0,6 mm) x 45 (-0 to +0,5 mm)
 Display: K48 - 4 Digit single display, red colour, h 12 mm + 3 LED Bargraph
 K49 - 4 Digit double display, red and green colour, h 7 mm.
 Weight: 180 g approx.
 Screw terminals: 12 screw terminals (screw M3 for cables from 0.25 to 2.5 mm² or from AWG 22 to AWG 14)
 Protection Degree:
 - Front protection: IP 54 (with gasket) according to EN60070-1 for indoor use
 - Screw terminal: IP20.

CONNECTIONS

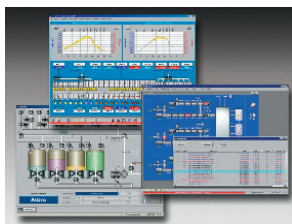


ACCESSORIES

A01 - Programming key
 Makes it possible to:
 - Memorize the configuration of an instrument to transfer it to other instruments
 - Transfer a configuration to a PC
 - Memorize a configuration memorized in a PC
 - Let the instrument "converse" directly with a PC.



WinTec - Supervisor
 - Data Acquisition
 - Supervision
 - Alarm management
 - Recipe management
 - Trend
 - Reports.



HOW TO ORDER

K48 - Regulator single display
 K48T - Regulator + timer
 K48P - Regulator + timer + programmer
 K49 - Regulator double display
 K49T - Regulator + timer
 K49P - Regulator + timer + programmer

Power supply
 L = 24 V AC/DC
 H = 100 - 240 V AC

Input
 C = J, K, R, S, T, PT100, 0/12...60 mV
 E = J, K, R, S, T, PTC, NTC, 0/12...60mV
 I = 0/4...20 mA
 V = 0...1V, 0/1...5V, 0/2...10V

Out 1
 R = SPST-NO 8 A Relay (resistive)
 O = VDC for SSR

Out 2
 - = Not available
 R = SPST-NO 8 A Relay (resistive)
 O = VDC for SSR

Out 3 / Digital inputs
 - = Not available
 R = SPST 5 A Relay (resistive)
 O = VDC for SSR
 D = 2 digital inputs

DIMENSIONS (in mm)

