

THREE PHASE MOTOR CONTROL



SWT / SIT range solid state contactors

Three phase contactor with heatsink and DIN rail mounting. Fitted with a LED indicators, and RC and VDR network protection designed to control resistive loads (AC-51) or for motor control (AC-53).



Product reference	Switching current AC-51	Switching current AC-53	Switching voltage	Peak voltage	Control voltage	Input R	I ² t	Specifications	Dimensions mm	Fig n°
SIT865390	3X22A	3x12A	24-510VAC	1200V	10-30VAC/DC	410 Ω	1500A ² s	Zero-cross	90x98x122	1
SIT865570	3X22A	-	24-510VAC	1200V	10-30VDC	560 Ω	1500A ² s			1
SIT865990	3X22A	3x12A	24-510VAC	1200V	90-240VAC	21 kΩ	1500A ² s			1
SWT860330	3x5A	3x5A	24-520VAC	1200V	10-30VAC/DC	410 Ω	265A ² s	Zero-cross	83x76x72	2
SWT861730	3x28A	3x16A	24-520VAC	1200V	10-30VAC/DC	410 Ω	5000A ² s			3
SWT861790	3x28A	3x16A	24-520VAC	1200V	90-240VAC	21 kΩ	5000A ² s		3	
SWT862030	3x32A	3x24A	24-520VAC	1200V	10-30VAC/DC	410 Ω	11000A ² s		3	
SWT862090	3x32A	3x24A	24-520VAC	1200V	90-240VAC	21 kΩ	11000A ² s		3	
SWT865080	3x50A	-	24-520VAC	1200V	10-30VAC/DC	410 Ω	5000A ² s		3	
									110x145x172	3

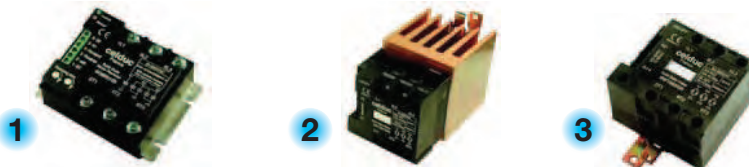
These products are defined with temperature rises of 50°C and permanent operation (operating cycle = 100%) of 8 hours in compliance with the European standards.

AC Reversing switches - SG9, SV9 & SW9

This relay is used to reverse the rotational direction of a motor. The SW9 series is ready to use with heatsink and DIN rail mounting integrated. They all supplied with LED indicators and protection against simultaneous controls.

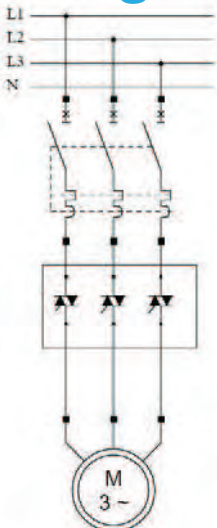
Product reference	Switching current AC-53	Switching voltage	Control voltage	I ² t	Protec.	Specifications	Dimensions mm	Fig n°
SG969100	3x6,6A	24-520VAC	10-30VDC	612A ² s	reversing + time delay	3 phase switching	100x73,5x39,5	1
SG969300	3x8,5A	24-520VAC	12-30VDC	1500A ² s		2 phase switching	100x73,5x39,5	1
SV969300	3x8,5A	24-520VAC	12-30VDC	1500A ² s		2 phase switching IP20 enclosure	100x76x56,5	4
SV969500	3x16A	24-550VAC	12-30VDC	5000A ² s		2 phase switching IP20 enclosure	100x76x56,5	4
SW960330	3x4,5A	24-550VAC	12-30VDC	1500A ² s		2 phase switching	100x76x72	3
SW961230	3x8,5A	24-520VAC	12-30VDC	1500A ² s		2 phase switching	83x90x155	2

Standard housing 40mm. Available in 47,6mm (E suffix) : please contact us

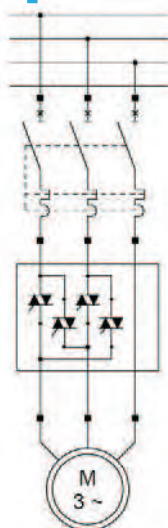


4 = 3 without DIN rail

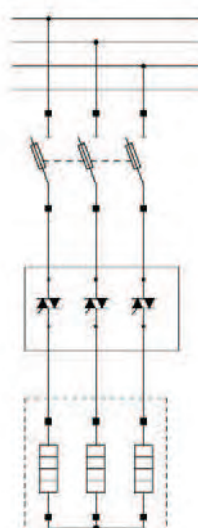
Wiring examples – Three-phase applications



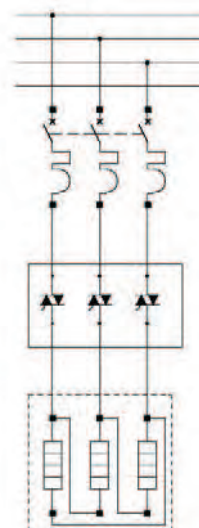
Three-phase SSR SVT8/SGT8 controlling a three-phase motor with a thermal - magnetic protection.



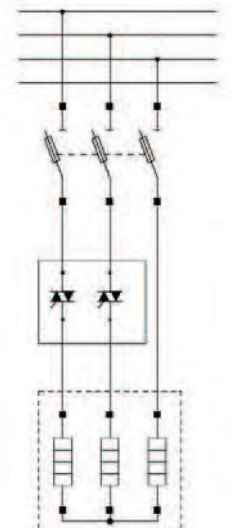
Motor reverser SV9 for three-phase asynchronous motor



Three-phase SSR SVT9/SGT9 to control heaters connected in star with fuses protection.



Three-phase SSR SVT9/SGT9 to control heaters connected in delta with circuit-breaker.



Two-phase SSR SOB9 to control heaters connected in star with fuses protection.