

Tecnologic 'K' Series

UK Quick Programming Guide – K38/39 & K49



This guide should be used alongside the full engineering manual, appropriate to the instrument being used, where more detailed information can be found.

Programming the Instrument

Tecnologic controllers are supplied with default programmable settings that may be suitable for your application. However we recommend that you go through the programming process, as incorrect programming could compromise its performance.

Programming level pass numbers:

1381 – Basic menu without 10 second time out

1400 – Advanced menu without 10 second time out

*** Minus 1000 to the pass number to add time out function ***

Note: To reset instrument to factory default settings, press **P** for 5 seconds and dial in **-481**.
Press **P** to confirm

Key



P button used for entering or moving to the next parameter.



Up & down buttons used for increasing or decreasing values.

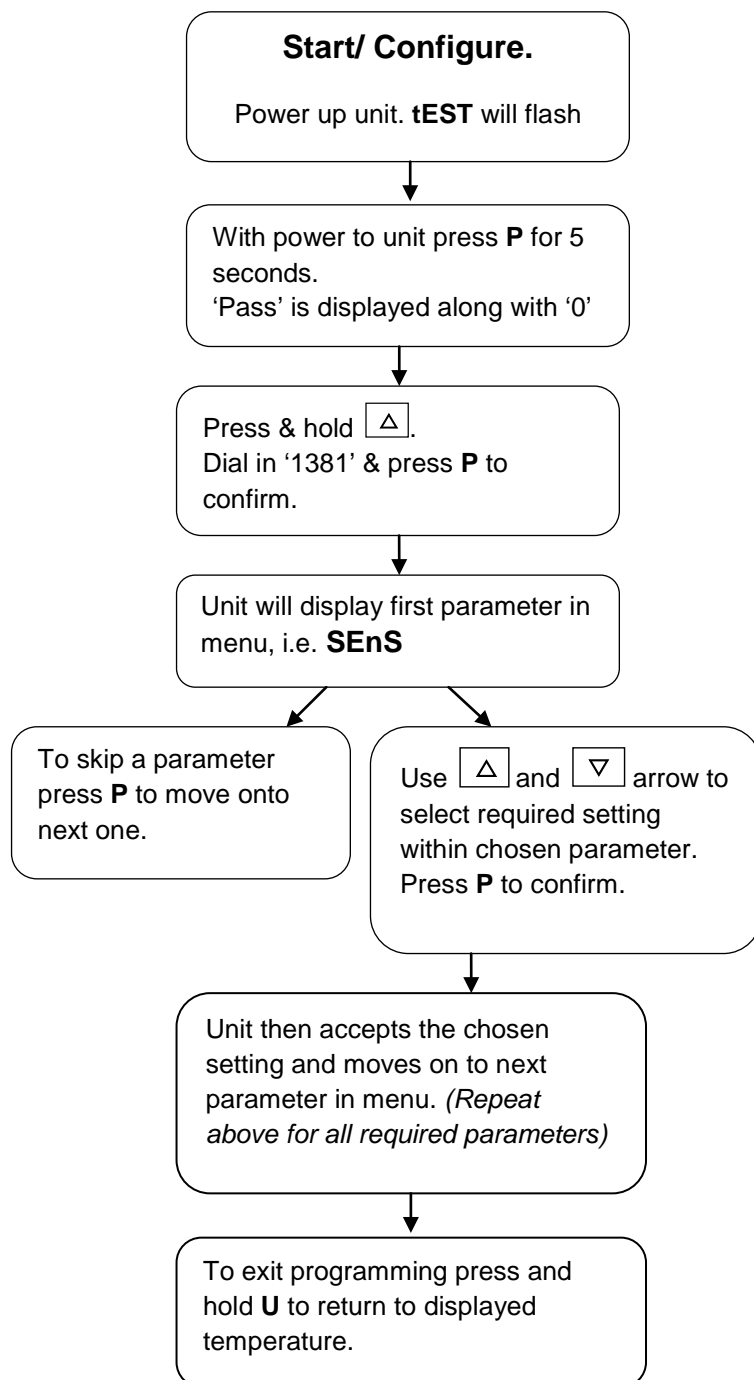


U button is used for navigation between menus.
Holding down for 1 second will take you back one step.
Holding down for 2 seconds will take you out of configuration.

Navigating the basic level programming guide

This is a blueprint guide for changing all the parameter settings on the instrument within the 381 menu.

381 Parameter menu



Display	Parameter name/ description	Manual ref.
SEnS	Sensor/ input type	[2]
dP	Decimal point position	[3]
unit	Engineering Unit	[6]
o1F	Output function 1	[12]
o2F*	Output function 2	[15]
cont	Control type	[52]
Auto	Auto tuning for PID parameters	[53]
Pb	Proportional band value (°C)	[58]
int	Integral time (sec)	[59]
dEr	Derivative time (sec)	[60]
Fuoc	Fuzzy overshoot control	[61]
H.Act	Heating output actuator	[62]
SPLL	Min. adjustable set point value	[73]
SPHL	Max. adjustable set point value	[74]
SP1	Control set point	[75]
AL1t	Alarm 1 type/function	[24]
AL1L	Min. adjustable alarm 1 value	[26]
AL1H	Max. adjustable alarm 1 value	[27]
AL1	Alarm 1 set point value	[28]
HAL1	Alarm 1 hysteresis (differential)	[29]
AL2t**	Alarm 2 type/function	[32]
t.F	Independent timer function	[84]
Pr.F	Programmer function at start-up	[89]
AdE***	Bargraph deviation	[118]

Note: Some parameters will disappear and/or additional parameters will appear depending on settings selected. If the advanced menu is required use the 1400 pass code & select appropriate menu using the 'U' key. Please refer to the main manual for more details.

*Please note that o3F or/and o4F will only show dependent on model.

** If set AL2t, L, H etc will be repeated as with alarm 1

*** Parameter will not appear on all models.