

AET1

- ETHERNET GATEWAY
- GALVANICALLY ISOLATED
- SELF POWEREED
- CAN BE USED WITH EVERY CONTROLLER (*)



FEATURES

SUPPORT

AET1

Functioning	<p>Support DHCP, automatically obtain an IP address and query IP address through serial setting protocol</p> <p>Support DNS function</p> <p>Auto-MDI/MDIX, RJ45 port with 10/100Mbps</p> <p>Serial port baud rate from 600 bps to 460.8 Kbps.</p> <p>Work mode: TCP Server</p> <p>Heartbeat package mechanism to ensure connection is reliable, put an end to dead link</p> <p>Under TCP Server mode, Client number ranges from 1 to 6; default number is 4</p> <p>The global unique MAC address bought from IEEE</p> <p>Across the gateway, switches, routers</p> <p>Can work in LAN, also can work in the Internet (external network)</p>
-------------	---

FUNCTIONAL

Processor	ARM
Flash	32k byte
Baud rate	38400, automatic selection
Master	Up to 6 (Pay attention ! On COMM side it's always an RS485)

ETHERNET

Ethernet port number	1
Protocol	ModBus RTU over TCP
Interface standard	RJ45
Rate	10/100 Mbps, MDI/MDIX, auto switch between cross and direct connection
Protection	2KV electromagnetic isolation
Network Protocol	IP, TCP, UDP, DHCP, DNS, HTTP, ARP, ICMP
Buffer	Send: 6K bytes, receive: 4K bytes

SERIAL

Serial port number	1
Interface standard	TTL
Data Bits	8
Stop Bit	1
Check bit	1
Baud rate	600 bps ~ 460.8 Kbps
Flow control	Null
Buffer	Receive: 800 bytes

SOFTWARE

Configuration	Computer set-up software, serial command, built-in webpage
---------------	--

GENERAL

Dimensions	28 x 87 mm, depth 20 mm
Power	<1W
Mounting	On OMEGA DIN A rail
Operating / storage temperature	0... 50°C (32... 122°F)/-20...+60°C (-4... 140°F)
Operating humidity	5... 95 RH% without condensation

(*) Note: which is not already equipped with an RS485 on board.

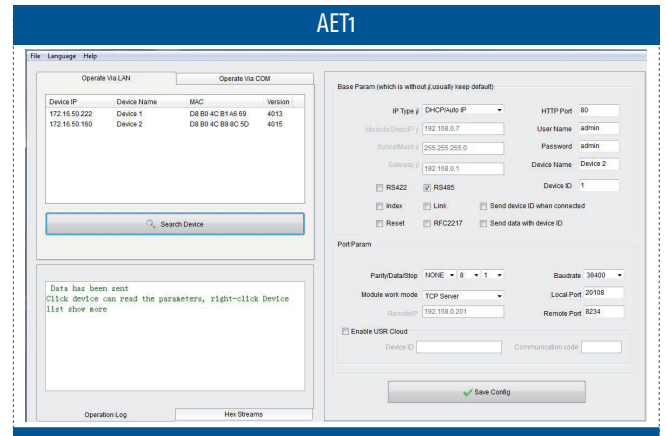
HOW TO ORDER

To compose the part number, pls. choose one of the option for each variable

AET1	CODE
MODEL	
Ethernet gateway - standard version	---

Note: a TTL cable is supplied with length 20 cm (part no.: CATLDO20).
In case of different needs, please contact our commercial dept.

SCREENSHOT



DIMENSIONS

